

CAPE ST. FRANCIS NATURE RESERVE

Introduction

Cape St. Francis nature reserve is situated on the scenic Cape south coast. It lies between the coastal villages of Cape St. Francis and St. Francis Bay, approximately 20 km south of Humansdorp on the N2.

The nature reserve comprises an area of about 120 ha with a coastline of 3 km. The nature reserve includes a sandy beach, a rustic rocky point and beautiful sand dunes with a spectacular view over St. Francis Bay.

Climate

St. Francis lies between the winter and summer rainfall areas. There is no clear wet or dry season, although the rainfall is higher in spring and autumn, and less in summer. The weather is unpredictable with some warm days in winter and some cold days in summer.

Vegetation

Coastal dune fynbos and coastal dune thickets are the main types of vegetation. The coastal dune thickets, occurring mostly in the valleys between the dunes, consists of dense thickets of milkwoods and candlewoods. The fynbos is characterized by Passerina and Metelasia species.

Animals

Bushbuck, grysbok, common duiker, bushpig, porcupine, vervet monkey, caracal, yellow and grey mongoose, and otter occur and are supported by the habitats in the nature reserve. The rare African black oystercatcher and occasionally an endangered Jackass penguin may be encountered. Bottle-nose and common dolphins are often seen off-shore, and from August to December southern right whales may be spotted.

Recreation

The reserve has a network of short trails, that hikers can walk, or choose to walk only parts of, starting either from St. Francis Bay or Cape St. Francis side.

Sandy Beach to the point (5 km, 2-3 hours) From Cape St. Francis to the far-point and back.

Circular route (5 km, 2-3 hours) From the entrance at St. Francis Bay or Cape St. Francis via the beacon viewpoint to the rocky coast and far-point and back along the southern shore.

Cape St. Francis to St. Francis Bay (1 km, 30min - 1 hour) From the entrances either on St. Francis Bay or Cape St. Francis side to the other side. This trail also links the two villages.

Fishing is allowed along the coast, according to the bag limits.

Dogs may be walked on leashes.

No animals may be disturbed or any plants removed.

No fires are allowed.

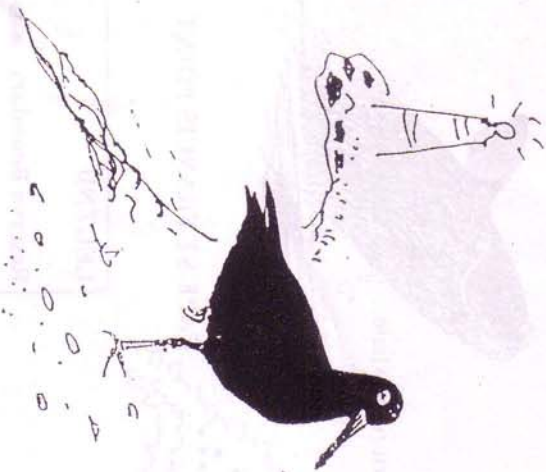
ENQUIRIES:

**FRIENDS OF THE ST.
FRANCIS NATURE AREAS**
P.O. BOX 295
6312 ST. FRANCIS BAY

TEL: (042) 298 0073

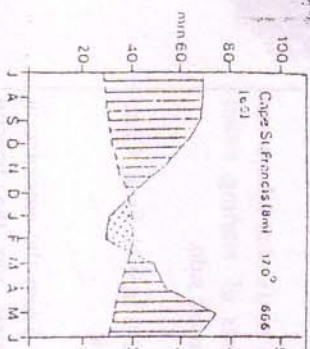
THE MANAGER
SEKOEIWIJVER NATURE RESERVE
P.O. BOX 173
JEFFREYS BAY 6330
TEL: (0423) 920339

DEPARTMENT OF ECONOMIC
AFFAIRS, ENVIRONMENT AND
TOURISM



CAPE ST FRANCIS NATURE RESERVE

White Milkwood



ST. FRANCIS BAY

SANTAREMA BAY

THATCH FARM

Cape St Francis Nature Reserve

Irma Booysen Flora Reserve

Seal Bay Nature Reserve

Cape St. Francis Lighthouse
Seal Point Nature Reserve

Kromme Trust Look Out

Cape clawless otter

Grysbok

Duiker

Passerina rigida
Gomnabas

ENTRANCE

ENTRANCE

ENTRANCE

39.0 Δ 306

Southern right whale

CAPE ST. FRANCIS POINT

Oyster catcher

Bottlenose dolphin

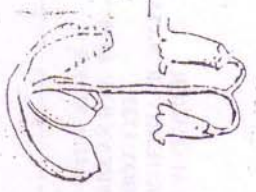
SEAL BAY NATURE RESERVE

CAPE ST. FRANCIS

PIGS FARM

LEGEND

- Reserve Boundary
- Parking
- Trails
- Viewpoint



GOIKENI

MUDI NIUM

CANDELWOOD

COAST OLIVE